



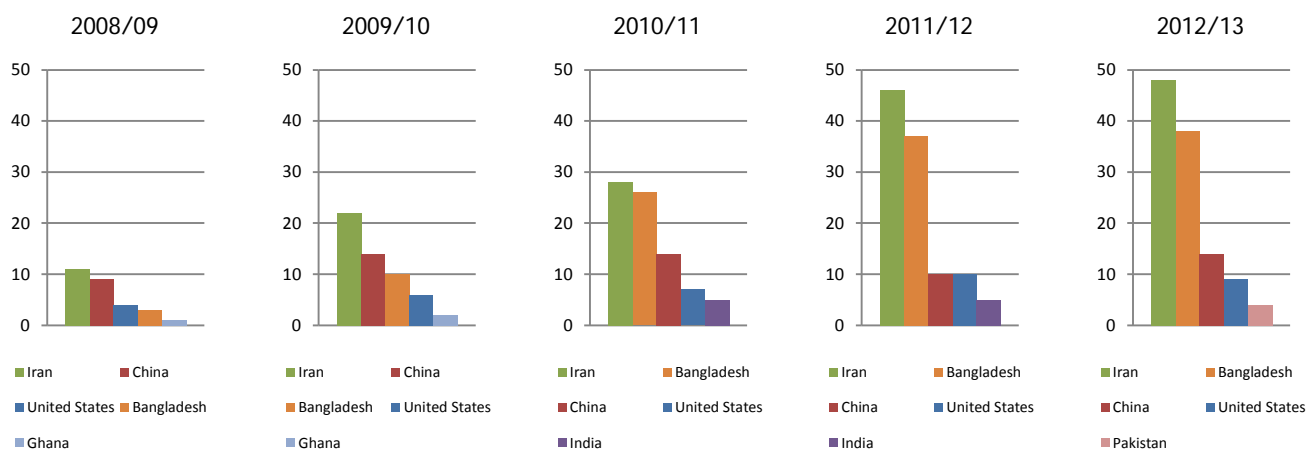
INTERNATIONAL ENGAGEMENT - International students' countries of origin - Top ten and # represented

	2012/13 UBC - Okanagan		2012/13 UBC - Vancouver		2012/13 UBC - V + O	
	Country	# of students	Country	# of students	Country	# of students
Graduate int'l students - Top ten countries of origin and # represented	Iran	48	China	730	China	744
	Bangladesh	38	United States	615	United States	624
	China	14	Iran	318	Iran	366
	United States	9	India	185	India	188
	Pakistan	4	Mexico	90	Mexico	92
	Egypt	3	Germany	89	Germany	91
	India	3	United Kingdom	82	United Kingdom	82
	7 countries tied for 8 th	2	South Korea	60	Bangladesh	65
			Chile	53	South Korea	61
		Saudi Arabia	49	Chile	54	

Undergraduate int'l students - Top ten countries of origin and # represented	China	194	China	1449	China	1643
	South Korea	49	United States	739	United States	779
	United States	40	South Korea	489	South Korea	538
	Japan	28	Japan	222	Japan	250
	China: Hong Kong	20	Malaysia	169	China: Hong Kong	188
	India	15	China: Hong Kong	168	India	176
	Pakistan	14	India	161	Malaysia	176
	Bangladesh	14	United Kingdom	154	United Kingdom	165
	United Kingdom	11	Indonesia	127	Indonesia	133
	Kenya	11	Singapore	119	Singapore	127

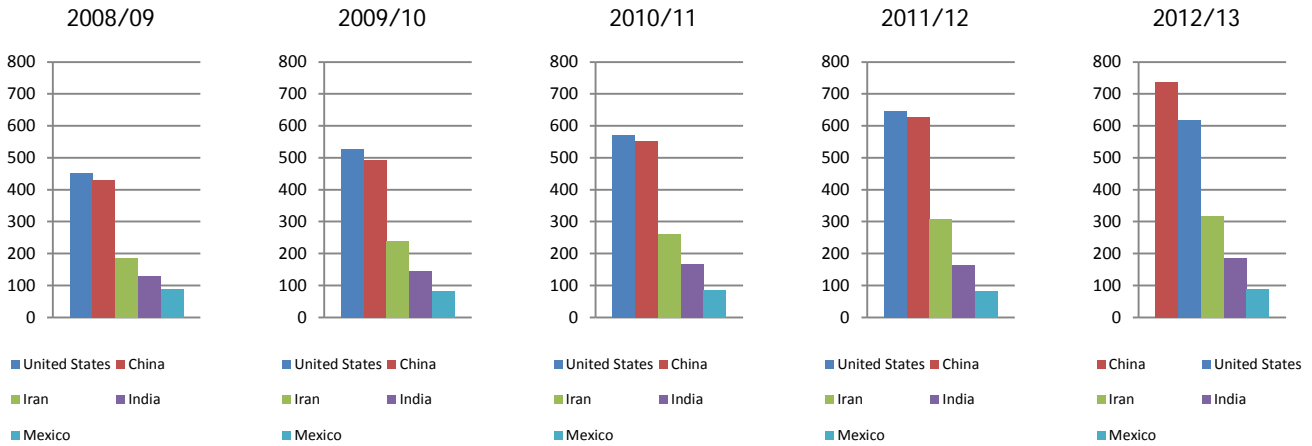
5-Year Trend of # Graduate International Students - Top Five Countries of Origin

Okanagan Campus



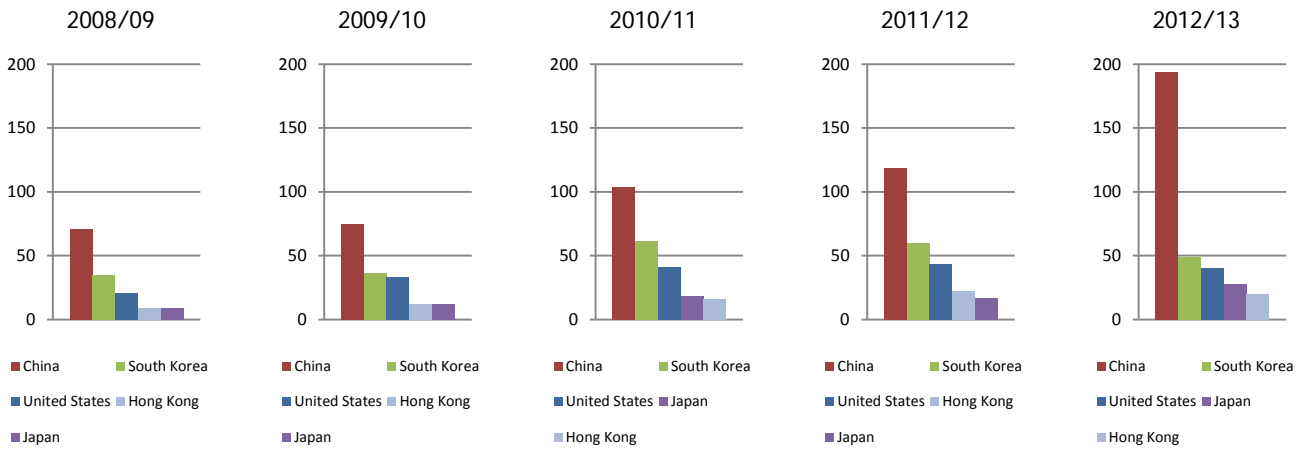


Vancouver Campus

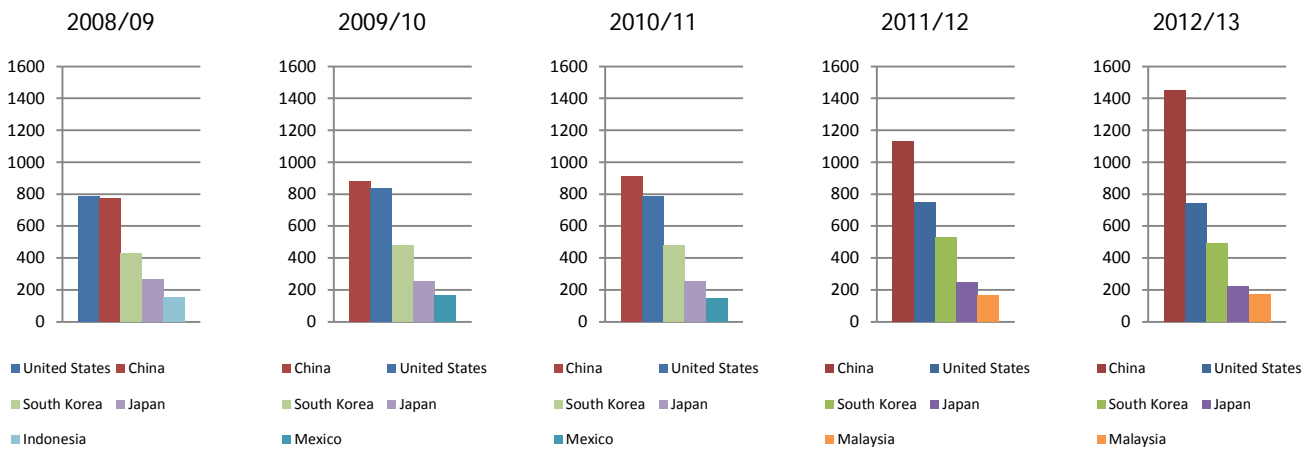


5-Year Trend of # Undergraduate International Students - Top Five Countries of Origin

Okanagan Campus



Vancouver Campus



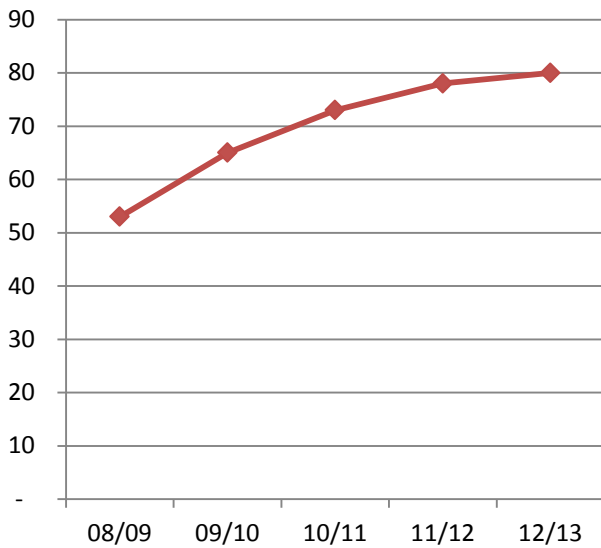


Number of Countries Represented by Doctorate International Students

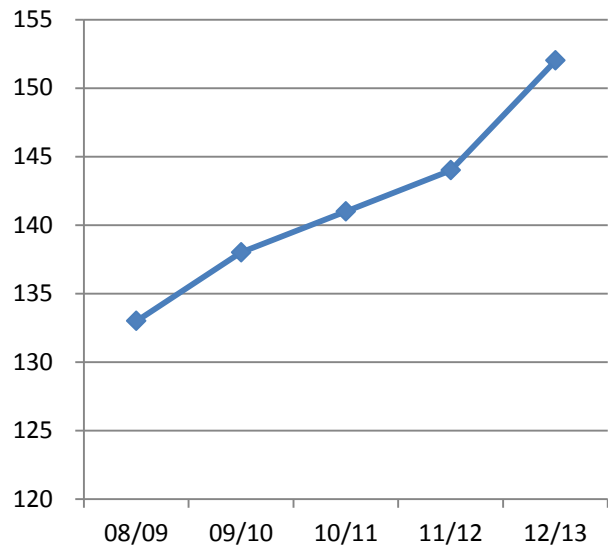
	UBC - Okanagan			UBC - Vancouver			UBC - V + O		
	2010/11	2011/12	2012/13	2010/11	2011/12	2012/13	2010/11	2011/12	2012/13
# countries represented by doctorate int'l students	73	78	80	141	144	152	143	146	154

5-Year Trend for # Countries Represented by Doctorate International Students

Okanagan Campus



Vancouver Campus



Description

- Enrolment data are taken at November of each year.
- Vancouver Campus includes Great Northern Way.
- Undergraduate includes baccalaureate and post-baccalaureate students.
- International includes visa students, those on work permits, ministry permits, diplomatic visas, and excludes permanent residents and refugees.

Person with lead responsibility for this metric: Associate VP Research, VPRI / Executive Director International.

Data collection will be from: Director, PAIR.

Date: Enrolment data: November 1, every year.